

# TexSpray RTX 1500

The RTX 1500 is packed with innovative features and performance points – designed for the professional texture contractor.

## RotoFlex HD Texture Pump\*

- 2.0 gpm (7.5 Lpm) output gets the job done quickly
- 100 psi (7 bar) material pressure allows longer hose lengths, minimizing time spent moving the sprayer
- Large, 7/8-in ID pump tube passes large particles easily

## Automatic Pressure Unloader\*

- Ensures a soft start with each trigger pull
- Eliminates the material blast that can impact finish quality
- Results in less material waste and less clean up
- Dramatically extends pump life

## QuikChange Pump Section

- No-tools pump removal and replacement
- Changes in less than 5 minutes

## High-Output Air Compressor

- Produces 6.5 cfm at 45 psi
- Projects texture farther
- Maximum 10.2 cfm displacement for long life

## Heavy-Duty RTX 1500 Air Spray Trigger Gun

- Durable cast aluminum design
- Oversized fluid passages for pumping heavy mud mixes and larger aggregate sizes
- Non-bleeder design shuts air flow off each time trigger is closed
- Extra-course gun head threads for quick nozzle changes

## Bonded Material/Air Hose

- Both hoses are permanently bonded together for easy handling
- No-tools hose connection with oversized grip

## Larger-Capacity Hopper

- 15-gallon capacity
- Steep sided to keep the thickest muds flowing to the pump
- No-tools removal for easy clean up

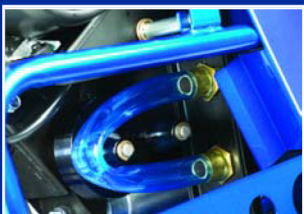
\* Patent pending

<sup>1</sup> Hose length is dependent on material viscosity



DESCRIPTION	PART NUMBER	MAX GPM (LPM)	MAX PSI (BAR)	MAX HOSE <sup>1</sup>
RTX 1500	248201	2.0 (7.5)	100 (7)	100 ft (30 m)

Comes complete with: 1 in x 25 ft (25.4 mm x 7.5 m) Hose, Heavy-Duty Trigger Gun, 6 Nozzles



RotoFlex HD Texture Pump.



Single motor operates both the pump and the compressor.\*



Optional fine finish kit produces a fan spray pattern (287227).